



IGNITE

confirmation & middle school ministry

fall-winter 2023-24
confirmation program & credit catalog



WHAT IS IGNITE CONFIRMATION?

"Ignite" Confirmation at Normandale Lutheran Church offers people of all ages the opportunity to gather for education, faith development, and growth as a community. It is an elective-based model of confirmation and education with the goal of moving beyond mere education toward formation and transformation! "Ignite" is a way to nurture an entire culture—an ecosystem— of faith formation here! **It has been thrilling to witness new relationships at Normandale over the past year+ since we introduced this new model, and are so eager to continue watching passions and interests in ministry expand within your families!**

At our core, **we believe that heart and hands must accompany the head in the work of Christian discipleship!** Therefore, in addition to monthly classroom-style education, we will offer opportunities for discovery, socialization, mentorship and relationship-building across boundaries by tapping into the life experience of multiple generations because we operate under the conviction that the content of faith has no traction outside of faith-based relationships.

CENTERING THE PURPOSE OF CONFIRMATION

Recognizing that we have the opportunity to more intentionally organize our program around our congregation's core values and the baptisms these young people will affirm at confirmation, we are offering a model which places at its center the baptismal promises found in the *Affirmation of Baptism* liturgy (ELW pg. 237):

1. Live among God's faithful people;
2. Hear the Word of God and share in the Lord's Supper;
3. Proclaim the Good News of God in Christ through word and deed;
4. Serve all people, following the example of Jesus; and,
5. Strive for justice and peace in all the earth.

At its best, confirmation is *so much more* than an academic curriculum.

In fact, the best possible outcome of confirmation would be young people understanding and affirming the promises made in their baptisms, while finding themselves situated as central members of the church-community who have been given opportunity to explore their own God-given gifts. The design of the program is to place these outcomes at its heart, and in a way that meets the needs (and schedules!) of families.

HOW DOES IT WORK?

In the recent past, confirmation has— by and large— looked like weekly lecture-based class, with occasional opportunity for experiential learning and very little focus on the kinds of transformational, intergenerational relationships we value so highly as Christian community. Going forward, requirements for students desiring to be confirmed will be:

- 1) **Monthly parent-student learning nights**, focusing on the core components of Christian faith, through a Lutheran lens. During this “semester,” we are also offering a few faith and skill series for you to attend (see more inside!)
- 2) **Earn at least 9 elective credits each year** across three categories: *Worship & Music*, *Mission & Outreach*, and *Community*, for a total of 18 credits across two years.
- 3) **New this year!** Meet with a **Faith Mentor** once a month, and each week after advent and Lenten worship. Your faith mentor must be a member of Normandale Lutheran Church who is not in your family. If you need help identifying/asking a mentor, please reach out to Pastor Ian.

Families, we have heard you loud and clear about the need for flexibility, so you may take any combination of courses at any time. For instance, if you are a 7th grader, you can complete 14 credits this year and four in 8th grade, if you know you'll have schedule conflicts next year. How you get the number required is up to you. You are encouraged to take more than the minimum number of courses, and are encouraged to do so!

Please note: if you have been participating in an ongoing way in places like Sunday School, singing in a church choir, or leading in worship, **you may absolutely continue to do those things for credit**, even if those options aren't listed in this catalog! Just register them as an “independent study” on the registration page.

NEW THIS YEAR: FAITH MENTORS!

One of the greatest gifts of being an active part of a church community is that we find ourselves in relationship with trusted people across generational lines. Taking on a mentor during your middle school years is an opportunity to get to know somebody deeper than mere recognition and having somebody to talk with about faith, doubt, school, family, or anything else that comes up in life. Many people continue calling their mentors/mentees “friend” for a lifetime!

We’re asking you to invite somebody to be your faith mentor for the year. This person should be an active participant in the worship and ministry life of Normandale Lutheran Church who is not a family member or on staff at church.

Our minimum “ask” of you and your mentor are that:

- you **meet at least once a month** during the school year (beginning in October through May)
- During Advent and Lent, you **worship together at Wednesday evening services and have conversation together afterwards.**

We will provide you with some guided conversation sheets as a starting point!

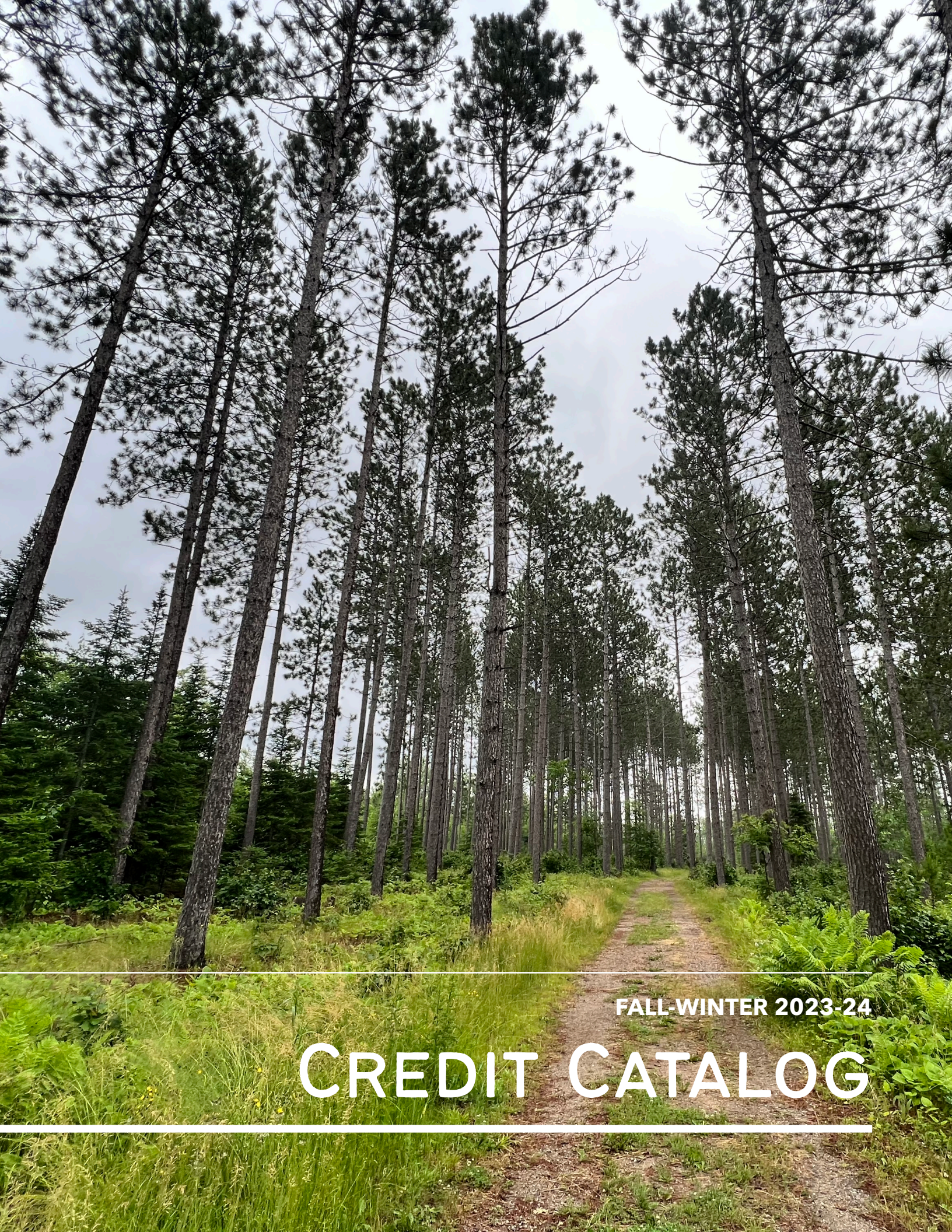
After brainstorming ideas of who you might like to invite along with your family, if you still need help finding a mentor, reach out to Pastors Ian, Rebecca, or Paul so that we can best help you connect with somebody!

REGISTERING FOR CREDIT COURSES

Some credit courses are offered for a limited number of participants. Because we want to be best prepared to make each experience the best it can be for you, we require pre-registration for these opportunities. Most credit courses are listed in this catalog for September 2023 through February 2024, and others will pop up as “extra credit” opportunities via email throughout the year. Links to the online registration forms for these courses will be provided for you via email. We ask that you register– even tentatively– **by September 20,** 2023.

There is a contact person listed on most of the credit options. Please note that **you do not have to reach out to the course leader once you register** unless you have specific questions for them about the course they’re leading. They will reach out to you with any additional coordination or scheduling needed.

Parents and other family members are encouraged to participate in many of these courses as well! **By the time students are confirmed, we want them to have grown in relationships with their peers, with the congregation across generations, and within their families!** It’s our desire to provide you as families with a variety of opportunities for this growth and exploration.



FALL-WINTER 2023-24

CREDIT CATALOG

WORSHIP & MUSIC CREDITS

Worship Leadership “Sampler Platter”

Did you know that in order for worship to happen at Normandale, it takes at least 7 volunteers? There are a ton of roles to fill in worship leadership! Spend three Sundays between September and February as an acolyte, a greeter, a reader, an usher, or a crucifer (who carries the cross). After three Sundays of worship leadership, you'll have achieved a credit toward the Worship category!

Leader: Kim Sannerud
ksannerud@normluth.org

1 Credit = Three Sundays of leadership

Run the Sound During Worship!

Did you know that every week during worship, people operate projectors, cameras, and microphones so that the congregation—both in the sanctuary and online—can see and hear what's happening in worship? You can learn how to do audio mixing with Loren Wolthoff, our congregation's media specialist.

Leader: Loren Wolthoff
lwolthoff@normluth.org

1 Credit = Three Sundays in the booth

Sing Our Faith in the Youth Choir

Youth choir is back! Singing is a significant part of many people's faith lives. And research shows that music helps experiences “stick” in our memories and bodies. Whether you've been in choir since you were a young child or a complete newcomer to singing, give it a shot!

Leader: Dr. Gregory Peterson
gpeterson@normluth.org

2 Credits = Register and participate in youth choir this fall and winter!

Independent Study (any category)

Is there something related to worship, mission, or community that you want to understand better? What would make the experience of worship more meaningful for you and your family? Bring your idea for an independent (or group) study to Pastor Ian, another pastor, or a staff person for approval—or to team up! This past year, your peers have studied a congregation rebuilding after an earthquake, played music in worship at a grandparent's church, and have even started learning to play organ with our Director of Worship & Music, Greg Peterson!

Leader: Pastor Ian McConnell
imccconnell@normluth.org

MISSION & OUTREACH CREDITS

"2nd Saturdays" Caregiver Respite with Normandale Center for Healing & Wholeness

During this monthly caregiving group event, we'll do activities like bingo, arts & crafts, card games, pet therapy dogs, listen to musicians (and others!) with seniors who have a diagnosis of Alzheimer's on the second Saturday of each month from 9 a.m. to noon. Pre-training is required and provided.

*Leaders: Cheryl Nickelson
cnickelson@normandalecenter.org*

1 Credit = Participation at any 2nd Saturday

"Stories I Didn't Know" Documentary and Community Conversation

We will gather together for grateful fellowship over pie and have guided table conversation! In preparation, you will watch a documentary in which Twin Cities local, Rita Davern examines a proud Minnesota family legend about ownership of local Pike Island. Rita's attempts to learn more leads her to face the complicated legacy of westward expansion in the U.S., but also toward building new and meaningful relationships.

*Leader: Pastor Rebecca Gamble
rgamble@normluth.org*

1 Credit = Attendance & participation on November 19th after worship until 11:45 a.m.

"Out of Abundance" Service Projects

On November 8th and 15th, we'll be doing service projects together! Out of the abundance of God's gifts to us— our time and our talents— we use for the sake of building God's kingdom on earth. Each evening will be a 1.5 hour surprise service project! Be at both to get this credit.

*Leader: Pastor Ian McConnell
imcconnell@normluth.org*

1 Credit = Attendance & participation at both November 8th and 15th.

Reading Buddies at Normandale Housing Corporation

Our long-standing partnership with Normandale House continues with strength as we accompany children in their learning journeys! Come eat a meal, play games, and provide some homework/reading help with some of the children from the Normandale House community. We're grateful for Diane Lindquist and all the volunteers who continue to provide leadership for Reading Buddies program, and we look forward to growing relationships between the two Normandales! :)

*Leaders: Diane Lindquist
dianelindquist99@gmail.com*

1 Credit for each time you help out at Reading Buddies!

COMMUNITY CREDITS

Just Like the Good Old Days... Canning Applesauce & Salsa!

Jesus cared deeply about the wellbeing of people— including (but not limited to) feeding people! We're going to learn how to make and can applesauce & salsa to be used all winter! You'll even bring some home to share!

*Leader: Kristi Shepherd
kshepherd@normluth.org*

1 Credit = Attendance at the September 30th event.

It's Back! Lefse at Normandale

We had so much fun together last year that we are offering it again... Lefse-making! This traditional Scandinavian treat has been made for countless generations. Whether you make it every year or are a first-timer, come!

*Leader: Judy Teigen
judyteigen@gmail.com*

1 Credit = Attendance on Saturday, November 18 from 10:00 - Noon

Stewardship Dinner Servers

Each fall, we ask families from the Normandale community to make financial pledges to "keep the lights on" and support the mission of the Church. For a second year, we are hosting stewardship dinners to tell the story of what we've done, and what we're looking forward to as we prepare

budgets for the upcoming year. Come serve at these dinners!

*Leader: Kristi Shepherd
kshepherd@normluth.org*

1 Credit per evening (Nov. 5, 6, 12 & 13)

"The Love Inside You" Self-Care Series

Join therapist Jessica Graham (withloveandfaith.com) and Pastor Ian for this three-week series on self-love and care. If God loves us deeply just as we are, who are we to love ourselves any less? Please commit to being at all three sessions to get credit!

*Leader: Jessica Graham
love.jessicafaith@gmail.com*

1 Credit = Attendance on Oct. 11, 18, 25.

Leadership Skills Series

It's never too early to develop skills for leadership! And it turns out our faith has something to teach us about how to lead well, whether at church, at school, in your families, or with friends. Your leadership is needed in our world! Come learn some practical skills for leadership with Chris Gamble (Principal at OneSchool Global... and also Pastor Rebecca's husband!) for this series! Please commit to the entire series for credit!

*Leader: Chris Gamble
1luckygamble@gmail.com*

1 Credit = Attendance on Jan. 17, 21, 28

CONFIRMATION DATES TO NOTE:

September 13	Parent-Student Confirmation Kickoff Meeting 6:45 p.m.
September 30	Applesauce Canning 9:30 a.m. (please register by 9/25!)
October 4	Parent-Student Learning 6:45 - 7:45 p.m.
October 11	"The Love Inside You" Series, Week 1 7:00 - 8:00 p.m.
October 18	"The Love Inside You" Series, Week 2 7:00 - 8:00 p.m.
October 25	"The Love Inside You" Series, Week 3 7:00 - 8:00 p.m.
November 1	Parent-Student Learning 6:45 - 7:45 p.m.
November 8	"Out of Abundance" Service Project Series
November 15	"Out of Abundance" Service Project Series
November 18	Lefse Making! (<i>registration required</i>) 10:00 a.m.
November 19	"Stories I Didn't Know" Documentary Conversation 10:40 a.m.
November 22	<i>No Ignite - Thanksgiving Eve</i>
November 29	Parent-Student Learning 6:45 - 7:45 p.m.
December 6	Advent Worship and Faith Mentors 6:30 p.m.
December 13	Advent Worship and Faith Mentors 6:30 p.m.
December 20	Advent Worship and Faith Mentors 6:30 p.m.
December 24	Christmas Eve Evening Worship
December 25	Christmas Morning Worship
January 3	<i>No Ignite - Christmas Break</i>
January 10	Parent/Student Learning 6:45-7:45 p.m.
January 17	Leadership Skills Series, Week 1 (more details to come)
January 21	Leadership Skills Series, Week 2 (more details to come)
January 28	Leadership Skills Series, Week 3 (more details to come)
February 7	Parent/Student Learning 6:45-7:45 p.m.
February 14	Ash Wednesday Worship 6:30 p.m.
February 21	Lent Worship and Faith Mentors 6:30 p.m.
February 28	Lent Worship and Faith Mentors 6:30 p.m.

Other course credit options, retreats, etc. will be announced periodically and sent to you via email.

